

OCFlock Management

Small Ruminant Reproductive Technologies



Charollais

[Click here to print a PDF of this page](#)

The Charollais breed originated in France, where they were raised alongside the Charolais cattle. They were later developed in the 19th century from a number of local breeds and crossed with the British Dishley. They were imported into the U.K. over 20 years ago. The Charollais is a first class terminal sire, and when crossed with a number of ewe breeds will produce lean, fast growing, heavy muscled, quality lambs at all weights. The Charollais is also noted for its incredible ease of lambing. They are a medium sized, heavy breed with a long loin and well muscled hindquarters. The clean head is pinkish grey and the wool is fine to medium and dense. They are docile, easy to handle and maintain body condition efficiently.



Chimaera 9E (Willy)

CHAROLLAIS, BCP 9E, SINGLE (ET)

Willy is one of the original Charollais embryos imported into Canada from the UK. His daughters and granddaughters are still working hard in our flock. Several of his offspring have been exported to Mexico and are meeting with great success in flocks there.

SEMEN ELIGIBILITY: USA, MEXICO

Owners: Dan Sinclair, Bowden, AB

website: www.canadiancharollais sheep.com

email: hdf@ocflock.com



BS6007	A19 2034
BE9018	AB 5036
X43043	A4 3027
S: PK 2059	D: DZ 7029
N80035	C30043
K21032	N5 2007
K26022	M5 8070

Rosebud 115E

CHAROLLAIS, RBC 115E, SINGLE (ET)
 DOB: APRIL 14, 1995,
 BW:14LBS., ADG: 0.55KG/DAY TO 100 DAYS

SCRAPIE GENOTYPE: ARR/ARQ RESISTANT
 SEMEN ELIGIBILITY: USA, MEXICO

Owners: Lynn Tait, Red Deer, AB.
 email: lynn@ocflock.com



This top quality ram is the result of the Sire Reference Program in the UK. He is lean, muscular and puts his mark firmly on his lambs. They exhibit length plus muscularity. The carcasses are heavy and lean. Rosebud 115E is an easy lamber and the resulting lambs are vigorous. Foundation genetics \$15.00/straw.

AJ2002	2069 Q12
CN5012	4008 S5
C51033	9025 S5
S: AB 8125	D: V6 6034
0122003	0121 F4
S53004	20D2 V6
S55004	7115 V6

Fieldstone FSC 10L

CHAROLLAIS, FSC 10L, TRIPLET
 DOB: APRIL 1, 2001

SCRAPIE GENOTYPE: ARR/ARQ RESISTANT
 SEMEN ELIGIBILITY: USA, MEXICO
 Foundation genetics \$15.00/straw.

Owners: Lynn Tait, Red Deer, AB.
 email: lynn@ocflock.com



FX 3054	KS 2036
DG 5137	FIELDSTONE 3F
DG 2006	AB 8102
S: FOULRICE EXPLORER DG	D: FIELDSTONE 15H
ND 9069	AB 8125
DG 4083	FIELDSTONE 5F
DG 2027	MEDICINE RIDGE 604D

Medicine Ridge 803M

MRFA 803M TRIPLET (AI) DOB: MARCH 13, 2002



SCRAPIE GENOTYPE: ARR/ARR VERY RESISTANT

Owners: Debra & Ian Clark , Bentley, AB

website: www.medicineridgefarm.com

email: iandebc@telusplanet.net

This ram was the highest performing Charollais in Alberta in 2002 and is the son (byAI) of CENTURION (AB8125), who was consistently one of the highest performers in the UK Charollais Sire Reference Program. His mother, 615G, is the highest indexing ewe in the Medicine Ridge Flock. He was a triplet and his brothers indexed 144 and 130. He is very correct in all respects, has excellent conformation, length and muscularity.

	AJ2002		KD1068
	CN5012		KS2036
	C51033		KS8040
S: AB 8125		D: MEDICINE RIDGE 615G	
	0122003		ND8016
	S53004		ND0027
	S55004		CW5001

Half Diamond 209P

HDA 209P TWIN (AI) DOB: MARCH 21, 2004

SCRAPIE GENOTYPE: ARR/ARR VERY RESISTANT

Owners: Dan Sinclair, Bowden, AB

website: www.canadiancharollais sheep.com

email: hdf@ocflock.com

Half Diamond 209P is a ram with extraordinary length and muscle qualities. He is the second highest indexing (LGI 206) ram in the Charollais Sire Reference Program, and the highest indexing ram on Half Diamond Farm. His dam, HDA138M, is one of our top producing ewes. 209P is sired by Castellau Ultra, an Irish ram used extensively in the sire reference program in Ireland. He is an outstanding ram who has emerged as one of the leading sires in the Irish Charollais Sheep Society. Ultra's daughters are proving themselves to be excellent mothers, at a Ewe Lamb Sale in the UK Ultra sired the 3 Top Priced Females out of the 22 on offer.



KN 1010
SCRATCHMERE
SENATOR LB
LB 9019
S: CASTELLAU
ULTRA TXB100
TZ 2002
TZ 5013
TZ 0026

AB 8125
ROSEBUD 115E
V6 6034
D: HALF DIAMOND
138M
CHIMAERA 11H
HALF DIAMOND 4J
MEDICINE RIDGE 616F



CASTELLAU ULTRA TZ 8100
SIRE OF HALF DIAMOND 209P
Photos taken 08/02 After his season's work!

Field Stone 38P

FSC 38P TRIPLET DOB: APRIL 4, 2004
BW: 4KG, WW 118D: 40KG
ULTRASOUND: FAT 3, 4, 4, AVG 3.6, RED 36
EPDS INDEX: 157

CHIMAERA 9E
FIELD STONE 3J
FIELD STONE 6F
S: FIELD STONE 22N
FIELD STONE 9F
FIELD STONE 17J
FIELD STONE 21H

DG 5137
FOULRICE EXPLORER
DG
DG 4083
D: FIELD STONE 8L
FIELD STONE 3F
FIELD STONE 15H
FIELD STONE 5F



FSC 38P 2007 Progeny

Owners: Frank Osterwoldt, Millet, AB
email: fsoster@telusplanet.net

FSC 38P is out of an excellent producing, high indexing ewe, herself a lamb by British sire Foulrice Explorer and from FSC 15H, one of FieldStone's best producing ewes. FSC 38P's sire's breeding includes famous British rams such as Crogham Centurion, Netherallan King and FSC 9F, a Ram sold as a breed flock standard to Mexico. FSC 38P stands square and has excellent back length with pronounced gigots.



FSC 30T



EWE LAMBS



FCS 28T A son of FCS 28P at the CSBA Sheep Classic 2008

Field Stone 25P

FSC 25P (CAN) 589545 TRIPLET (AI) MARCH 23, 2004
EPDs from Genovis. 100 day wt +3.11lbs Growth index 3.77

FINDATIC MAC FT5055

ADJANE MASTER MAC

ZRF4003

S:NORTHALL ZYV2061

D: FIELD STONE 22K

NORTHALL NIMBUS ZYV8013

ZYV0051

ZYV7072



AB 4060

FIELD STONE 9F

B16 6019

KS 2036

FIELD STONE 3G



AB 0184

SIRE'S SCRAPIE GENOTYPE: ARR/ARR
VERY RESISTANT

Owners: Dan Sinclair, Bowden, AB
email: hdf@ocflock.com

FSC 25P is a very impressive ram. He has a large frame, is very correct and well balanced, together with very correct feet and legs. This guy will add size and muscling to your flock. His sire, ZYV 2061, is one of the highest ever indexing rams for Carcass Muscling in the UK Charollais Sire Reference Program. This is even more impressive knowing 25P was born a triplet. His offspring in the UK have been in the Top 5% for muscling in the UK

Sire Reference Scheme.

25P's first lamb crop is being evaluated for EPD's now. They look extremely promising with good growth, conformation, and lots of muscle.

25P's sire, NORTHALL ZYV2061, breeding values are: 8 week: 3.23kg; 20 week: 6.37kg; muscle: 5.10mm; index: 296. He has the highest growth rate with Charollais sires in 2002. One of his progeny has still managed to record the highest muscularity figure of all the Charollais lambs born in 2005 (8.10). His lambs have an average muscle EBV of over 4mm (top 5% of scheme). NORTHALL'S progeny grow exceptionally well without the need for supplementary feed.

Half Diamond 430N

HDA 430N (CAN) 578852 MARCH 14/03 TWIN

DG 5137
 FOULRICE EXPLORER DG
 DG 4083
 S: FIELD STONE 24L
 FIELD STONE 9F
 FIELD STONE 34H
 FIELD STONE 7F

CHIMAERA 9E
 PK 2059
 DZ 7029
 D: HALF DIAMOND 51K
 MEDICINE RIDGE 607E
 MEDICINE RIDGE 616F
 MEDICINE RIDGE 604D



Owners: Dan Sinclair, Bowden, AB
 website: www.canadiancharollais sheep.com
 email: hdf@ocflock.com

Exceptionally well muscled ram. He sired 4 of the top 8 rams in the Western Super Sire Program for 2005. The other 4 of 8 lambs were sired by 430N's sire, FSC 24L.

Half Diamond 115M

CHAROLLAIS HDA 115M TWIN (AI) MARCH 2, 2002

SOLD OUT IN CANADA | AVAILABLE IN CHILE THROUGH COOPRINSEM



KN 1010

PK 2059

LB 3055

CHIMAERA 9E

LB 0052

DZ 7029

S: CEDAR CREEK BIG BEN
120F

D: HALF DIAMOND 52K

MEDICINE RIDGE 607E

DJ 1001

MEDICINE

PK 3019

RIDGE 616F

PK 0004

MEDICINE RIDGE 604D

SCRAPIE GENOTYPE: ARR/ARR VERY RESISTANT

Owners: Dan Sinclair, Bowden, AB

website: www.canadiancharollais sheep.com

email: hdf@ocflock.com

Large correct ram with very wide loin and lots of frame. His good maternal traits are evident with his outstanding sisters and daughters exhibiting excellent maternal instincts.

FIELDSTONE 111S

FSC 111S (CAN) 614246 APRIL 19 2006 SINGLE
EPDs from Genovis 100 day wt + 2.92lbs Growth index 3.34

Owners: Dan Sinclair, Bowden, AB

website: www.canadiancharollais sheep.com

email: hdf@ocflock.com

This ram was the Highest Indexing and Highest Selling Charollais Ram at the 2007 Western Super Sire Sale in Olds, AB. He had the Second Highest Lean Growth Index in the Charollais Sire Reference Program for 2007. He has very correct conformation and excellent muscle. EPDs: WT: +1.21 kg Muscle Depth: +0.12 mm Fat Depth: -0.08 m



HYDE SIROCCO

ARJANE MASTER MAC ZR8004

HYDE BOMBADIER

DALBY CONCORDE PE2086

SU 8046

PE0028

S: FIELD STONE 24R

D: FIELDSTONE 38R

FOULRICE EXPLORER DG 7112

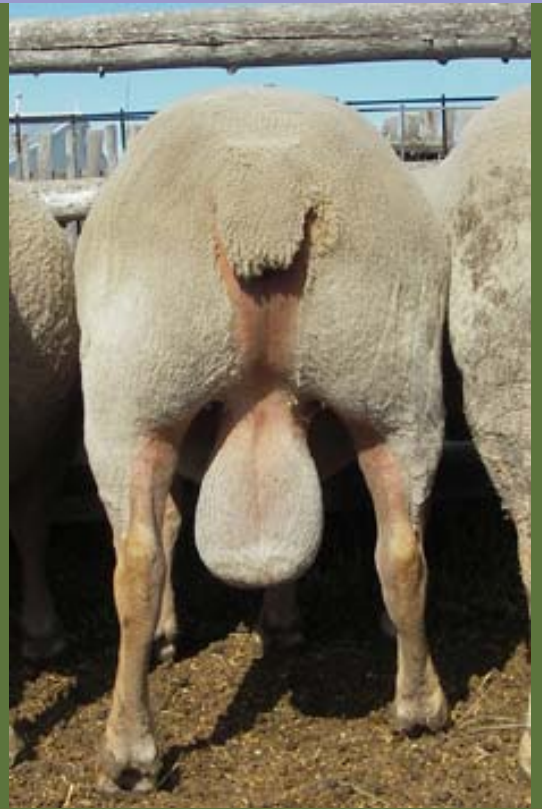
FIELDSTONE 21K

FIELD STONE 9L

FIELDSTONE 19M

FIELD STONE 15H

FIELDSTONE 40L



[HOME](#)	[REPRO. TECH.](#)	[TRAINING PROGRAMS](#)	[TESTIMONIAL LETTER](#)	[HISTORY](#)	[TEST REQ.](#)
[CONTACT US](#)	[LINKS](#)				
[BOWDEN, ALBERTA COLLECTION FACILITY](#)	[DUTTON, ONTARIO COLLECTION FACILITY](#)				
[EMBRYOS](#)	[RAM SEMEN](#)	[BUCK SEMEN](#)	[UK SEMEN](#)		